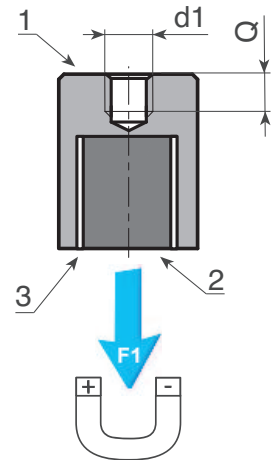
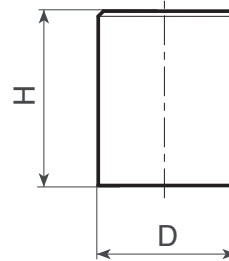


47007334 IMÁN CILÍNDRICO DE AlNiCo CON AGUJERO CIEGO ROSCADO



- (1) Cubierta de acero galvanizado.
 (2) Imán cilíndrico de aluminio-níquel-cobalto (AlNiCo).
 (3) Separador de latón.

Temperatura de trabajo de -20°C a +450°C.



| Código | D \pm 0,1 | H \pm 0,2 | d1 | Q | P (g) | F1 (N) |
|-------------|-------------|-------------|-----|----|-------|--------|
| 47007334301 | 6 | 20 | M03 | 7 | 4 | 6 |
| 47007334302 | 8 | 20 | M03 | 7 | 7,5 | 12 |
| 47007334303 | 10 | 20 | M04 | 8 | 11 | 24 |
| 47007334304 | 13 | 20 | M04 | 8 | 20 | 60 |
| 47007334305 | 16 | 20 | M04 | 10 | 30 | 90 |
| 47007334306 | 20 | 25 | M06 | 10 | 58 | 135 |
| 47007334307 | 25 | 35 | M06 | 10 | 131 | 190 |
| 47007334308 | 32 | 40 | M08 | 12 | 243 | 340 |
| 47007334309 | 40 | 50 | M08 | 15 | 490 | 700 |
| 47007334310 | 50 | 60 | M10 | 15 | 915 | 1000 |
| 47007334311 | 63 | 65 | M12 | 20 | 1579 | 1700 |