



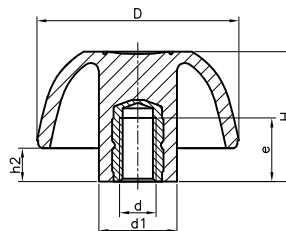


110038K MTC CON CASQUILLO ROSCADO



	RAL 7021
	RAL 2004
	RAL 3001
	RAL 5005



Casquillo de latón roscado.
PA: Poliamida reforzada.
Disponible en color negro, naranja, rojo y azul.

Código Negro	Código Naranja	Código Azul	Código Rojo	D	H	d1	d	e	h2
11003825302	11003825342	11003825346	11003825349	25	17	12	M4	8,5	6
11003825303	11003825343	11003825347	11003825350	25	17	12	M5	9	6
11003825301	11003825341	11003825348	11003825351	25	17	12	M6	10	6
11003832303	11003832343	11003832347	11003832348	32	20	14	M5	9	6
11003832301	11003832341	11003832350	11003832349	32	20	14	M6	10	6
11003840301	11003840341	11003840346	11003840348	40	25	17	M6	10	7
11003840302	11003840342	11003840350	11003840349	40	25	17	M8	14	7
11003840303	11003840343	11003840347	11003840351	40	25	17	M10	17	7
11003850301	11003850341	11003850347	11003850350	50	32	19	M8	14	8
11003850302	11003850342	11003850348	11003850351	50	32	19	M10	17	8
11003850308	11003850345	11003850349	11003850352	50	32	19	M12	19	8
11003863301	11003863341	11003863346	11003863349	63	40	23	M10	17	11
11003863302	11003863342	11003863347	11003863350	63	40	23	M12	19	11
11003863306	11003863344	11003863348	11003863351	63	40	23	M16	27	11