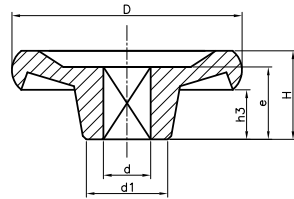
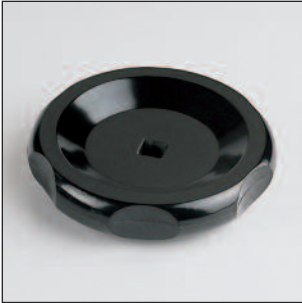


### 110032P VOLANTE EUROPEO CON AGUJERO PASANTE CUADRADO



| Código      | D   | H  | d     | e  | h3 | d1 | Color |
|-------------|-----|----|-------|----|----|----|-------|
| 11003206401 | 65  | 20 | 10x10 | 15 | 11 | 26 | Negro |
| 11003208401 | 80  | 21 | 10x10 | 15 | 9  | 34 | Negro |
| 11003210401 | 100 | 23 | 10x10 | 15 | 5  | 44 | Negro |
| 11003212401 | 125 | 31 | 12x12 | 21 | 10 | 40 | Negro |
| 11003215401 | 150 | 32 | 12x12 | 21 | 7  | 50 | Negro |

Agujero pasante cuadrado.  
PF: Resina fenólica negra FS 31 DIN 7708.