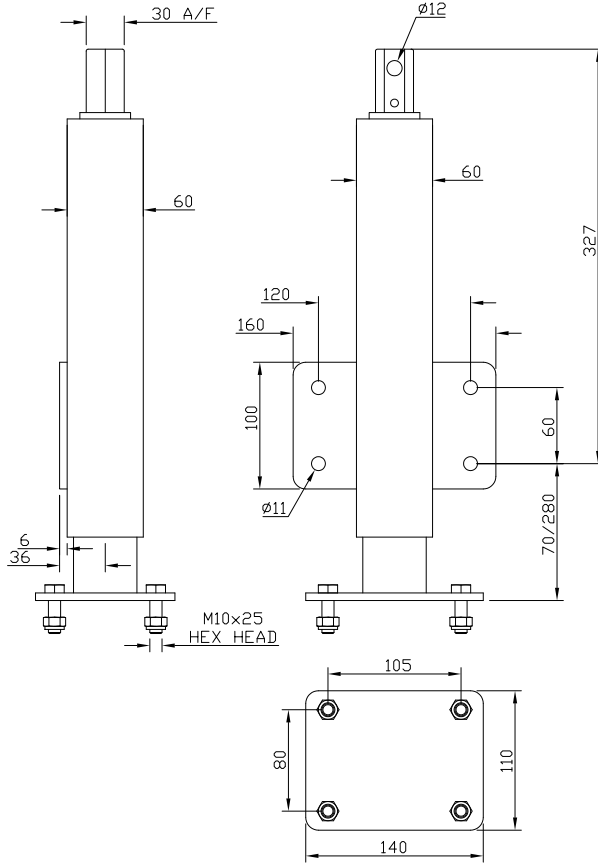


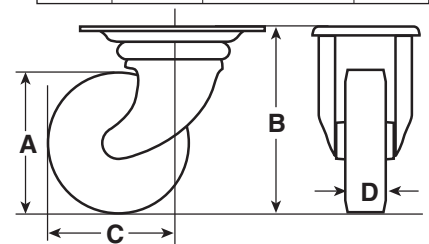
Jacking Units JBG Series

Load rating 600kg



Brauer has designed and developed a range of four jacking units, which now cover the full loading spectrum for jacking unit use, where lifting by raising a trailer, flat bed or trolley bed on castors or without castors (flat footed) to align with a docking area, is required. The family consist of the lighter loaded JBG series which has a capacity of 600Kg right up to the heavy duty JWG series with loading capacities of 2500Kg per jacking unit. Quality, design and availability are enhanced, as all four of the Brauer jacking units are made at our Milton Keynes facility. The JBG has been designed to suit our HA castor range which has wheel options, from 125mm to 200mm diameter and uses an aluminium centred wheel with a polyurethane tyre. The JBG jacking unit is offered generally, but not exclusively, with the swivel castor option. Other wheel and castor types can be fitted to all models of the Brauer jacking units, should this be a consideration please contact Brauer sales.

SWIVEL CASTORS TOP PLATE DIMENSIONS			
Wheel Dia.	Plate Size	Hole Centres	Fixing Bolt Dia.
125	135 x 110	105 x 80	10
150	135 x 110	105 x 80	10
200	135 x 110	105 x 80	10



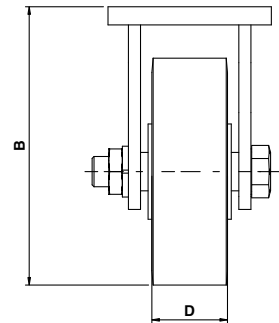
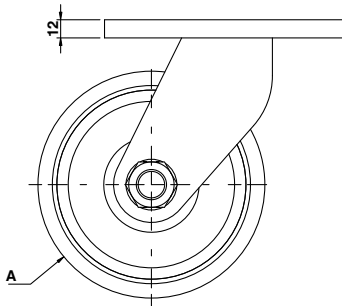
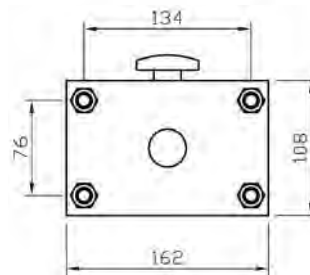
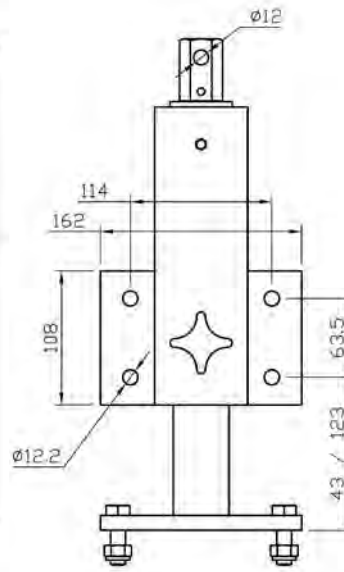
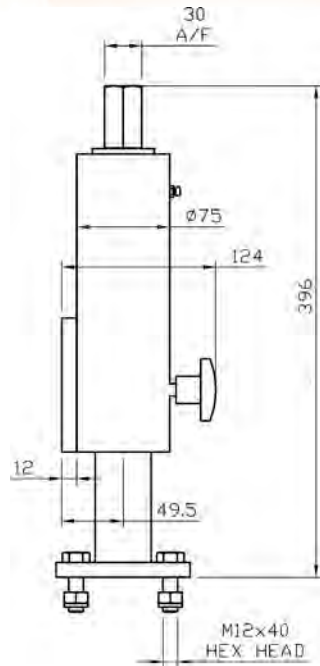
FOR TECHNICAL INFORMATION COVERING LOAD FACTORS, ETC., SEE 'DESIGN DATA' INDEX ON PAGE 20

A	B	C	D			Swivel	
Wheel Diameter	Overall Height	Swivel Radius	Tread Width	Max Load Rating	Wheel Bearing Type	PART NUMBER	Approx Weight kg
ALUMINIUM CENTRED WHEEL WITH POLYURETHANE TYRE							
125	156	118	50	350	Ball Journal	JBG/HA125/50BJ	8
150	196	130	50	400	Ball Journal	JBG/HA150/50BJ	9
200	240	155	50	500	Ball Journal	JBG/HA200/50BJ	10
JACKING UNIT ONLY						JU600	6

600KG JACKING UNIT

JGG Series

Load rating 1000kg

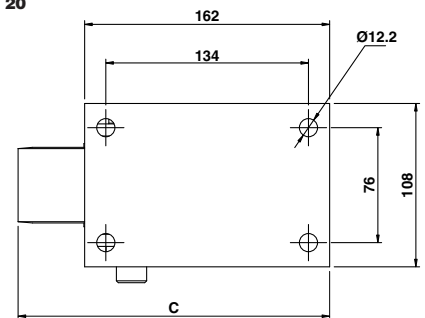


Brauer have developed a range of jacking units expanding further our comprehensive range of heavy duty castors and wheels. The jacking units are highly adaptable across a broad range of environments and applications. Many options are available giving this new product unsurpassed flexibility for the worldwide market place. Availability and delivery is enhanced due to products being totally manufactured within the wheels and castors division based in the UK. Robust design. Load rating up to 1000kg per unit. Integral swivel mechanism incorporated into jacking castor. Designed to suit our GG fixed castor. Wheel options from 100mm to 250mm diameter. Wheel options include steel, polyurethane and nylon. Jacking units now form part of Brauer comprehensive range of wheels and castors.

Approximate weight: 25Kg

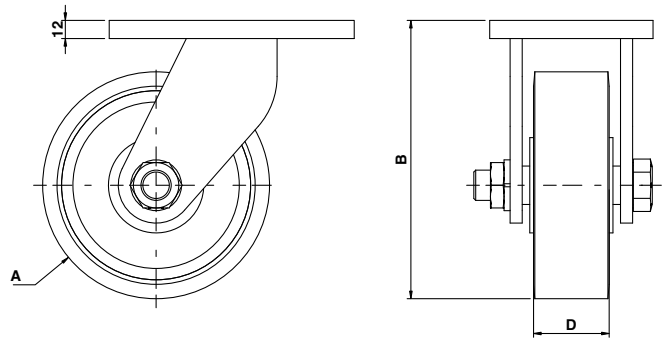
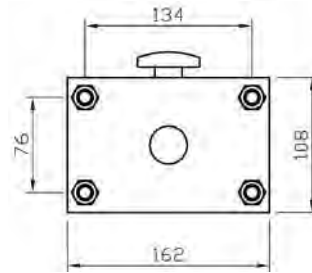
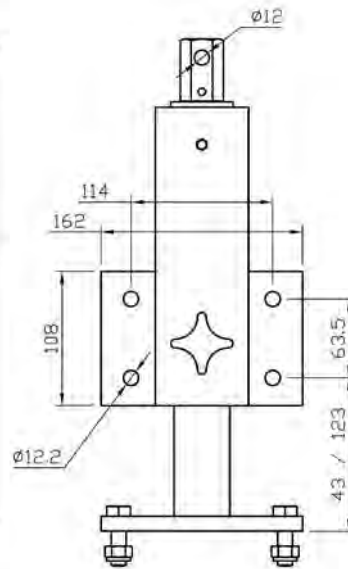
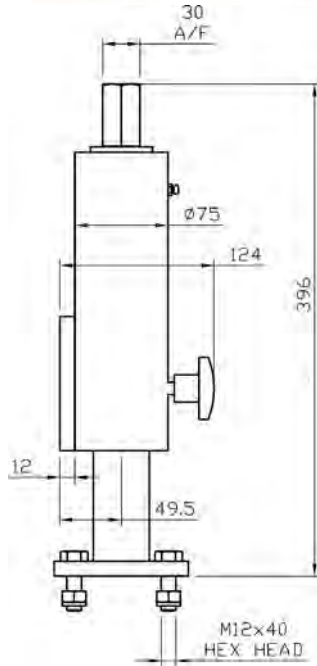
FOR TECHNICAL INFORMATION COVERING LOAD FACTORS, ETC., SEE 'DESIGN DATA' INDEX ON PAGE 20

A	B	C	D				
Wheel Diameter	Overall Height	Overall Length	Wheel Width	Max Load Rating	Wheel Bearing Type	PART NUMBER	Approx Weight kg
POLYURETHANE TYRED WHEEL							
100	133	171	40	450	Ball Journal	JGG/H100/40BJ	33
150	184	206	50	900	Ball Journal	JGG/H150/50BJ	34
200	235	241	40	900	Ball Journal	JGG/H200/40BJ	36
250	286	276	45	1000	Ball Journal	JGG/H250/45BJ	41
JACKING UNIT ONLY						JU1000	25



NOTE: Also available with other wheel types.

1000KG JACKING UNIT

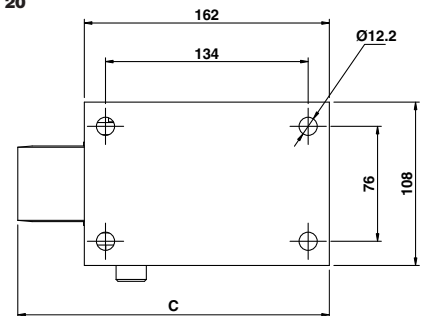


Brauer have developed a range of jacking units expanding further our comprehensive range of heavy duty castors and wheels. The jacking units are highly adaptable across a broad range of environments and applications. Many options are available giving this new product unsurpassed flexibility for the worldwide market place. Availability and delivery is enhanced due to products being totally manufactured within the wheels and castors division based in the UK. Robust design. Load rating up to 1600kg per unit. Integral swivel mechanism incorporated into jacking castor. Designed to suit our MG fixed castor. Wheel options from 150mm to 300mm diameter. Wheel options include steel, polyurethane and nylon. Jacking units now form part of Brauer comprehensive range of wheels and castors.

Approximate weight: 26Kg

FOR TECHNICAL INFORMATION COVERING LOAD FACTORS, ETC., SEE 'DESIGN DATA' INDEX ON PAGE 20

A	B	C	D				
Wheel Diameter	Overall Height	Overall Length	Wheel Width	Max Load Rating	Wheel Bearing Type	PART NUMBER	Approx Weight kg
POLYURETHANE TYRED WHEEL							
150	184	206	50	900	Ball Journal	JMG/H150/50BJ	35
200	235	241	40	900	Ball Journal	JMG/H200/40BJ	37
250	286	276	45	1300	Ball Journal	JMG/H250/45BJ	42
300	337	312	50	1500	Ball Journal	JMG/H300/50BJ	47
JACKING UNIT ONLY						JU1600	26

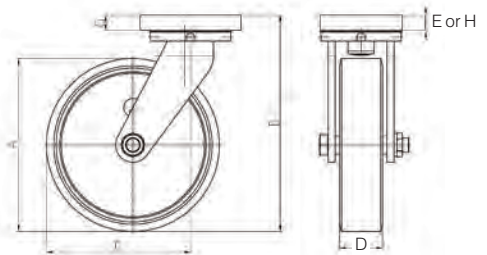
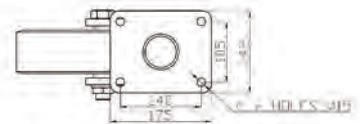
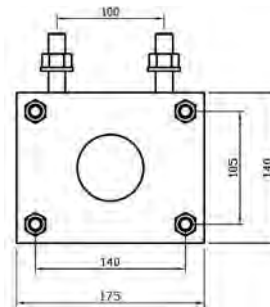
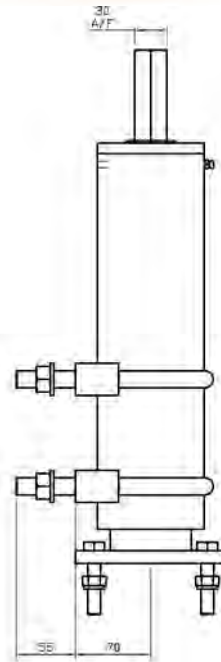
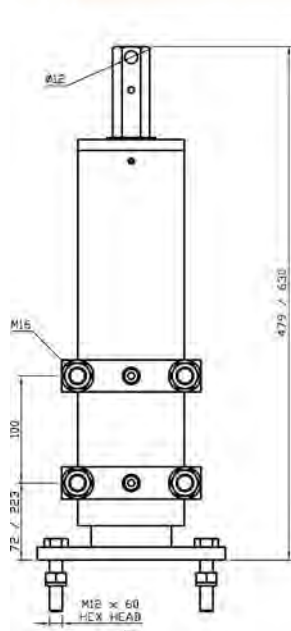


NOTE: Also available with other wheel types.

JWG Series

Load rating 2500kg

BRAUER®



Brauer have developed a Jacking Unit, which is now available for general purchase. The Jacking unit is adaptable to many environments and applications due to our in house design team and manufacturing capability. Many options are available due to the integration of our WG Series Castor into the design, giving unsurpassed flexibility to the market place. Availability and delivery are enhanced because we are a leading UK manufacturer and control all aspects of the Jacking Unit.

Load rating up to 2500kg per unit.

Bespoke design which is now incorporated into our full range of wheels and castors. Robust design. Designed to suit our WG castor range. Wheel options from 150mm to 300mm diameter. Swivel and fixed castor options. Flat foot option for non castor applications. Approximate weight 35Kg.

(E) Swivel top plate thickness 26mm

(H) Fixed top plate thickness 12mm

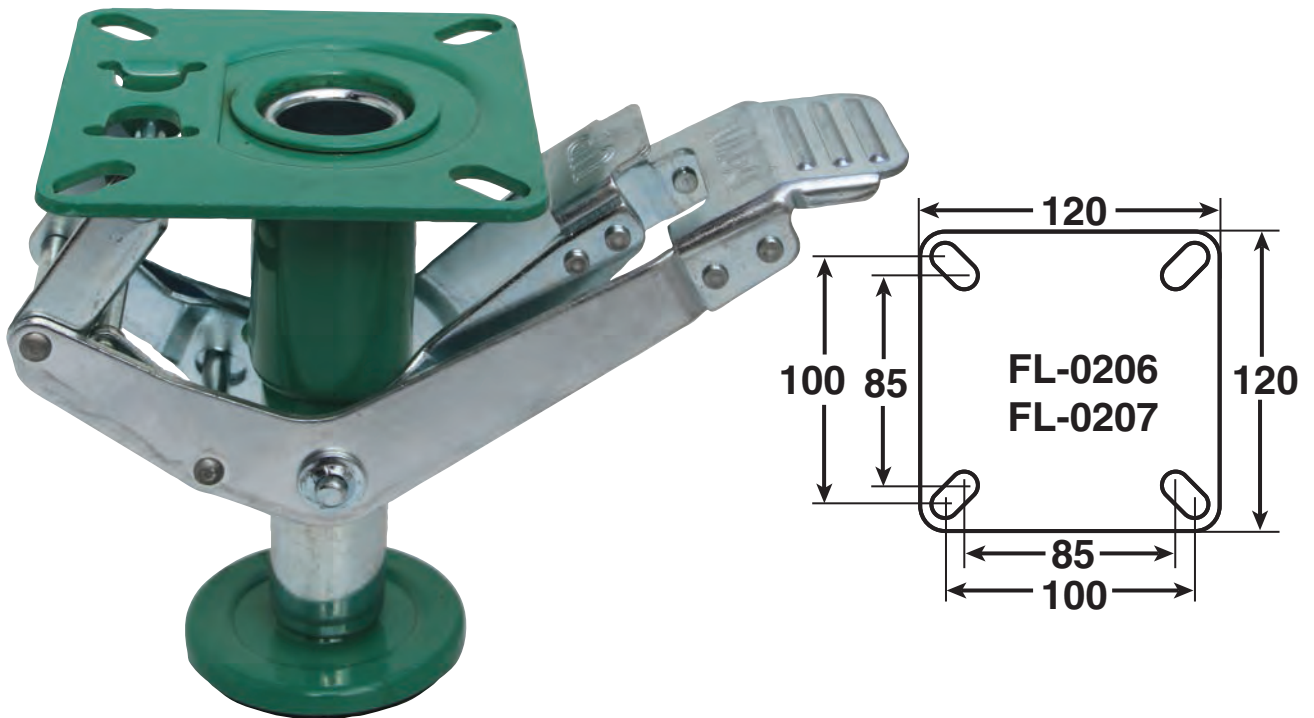
NOTE: Also available with other wheel types.

FOR TECHNICAL INFORMATION COVERING LOAD FACTORS, ETC., SEE 'DESIGN DATA' INDEX ON PAGE 20

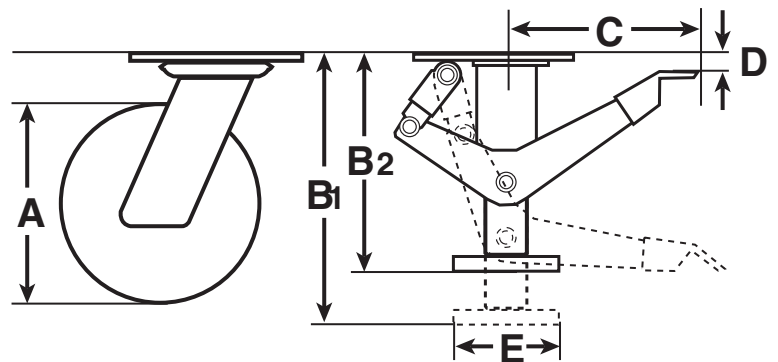
A		B		C		D		▽ Swivel		▽ Fixed	
Wheel Diameter	Overall Height	Swivel Radius	Tread Width	Max Load Rating	Wheel Bearing Type	PART NUMBER	Approx Weight kg	PART NUMBER	Approx Weight kg		
POLYURETHANE TYRED WHEEL											
6"	150	220	125	50	900	Taper Roller	JWGS/H150/50TB	48	JWGF/H150/50TB	48	
8"	200	265	160	75	1750	Taper Roller	JWGS/H200/75TB	59	JWGF/H200/75TB	59	
10"	250	310	200	70	2000	Taper Roller	JWGS/H250/70TB	57	JWGF/H250/70TB	57	
12"	300	375	250	75	2300	Taper Roller	JWGS/H300/75TB	61	JWGF/H300/75TB	61	
JACKING UNIT ONLY									JU2500	35	

2500KG JACKING UNIT

A positive means of stabilising trolley and mobile equipment



Floor lock top plates have fixing holes to suit 10mm diameter bolts



Designed to steady the equipment to which they are fitted and stop horizontal movement, floor locks are never intended to act as a jack. Any attempt to vary the fitting height from the catalogue specification will give failure and/or damage. There is some built-in resilience in the foot pad, which will allow some variations in floor level. Nonetheless it is essential that the floor lock is fitted as closely as possible to one of the swivel castors. Please note that the floor lock can be severely damaged if the linkage is operated whilst the truck is moving.

A	B1	B2	C	D	E	MODEL NUMBER
For Castors With Wheel Diameter	Mounting Height	Retracted Height				
4"	100	150	140	5	80	FL-0206
6"	150	210	145	8	80	FL-0207